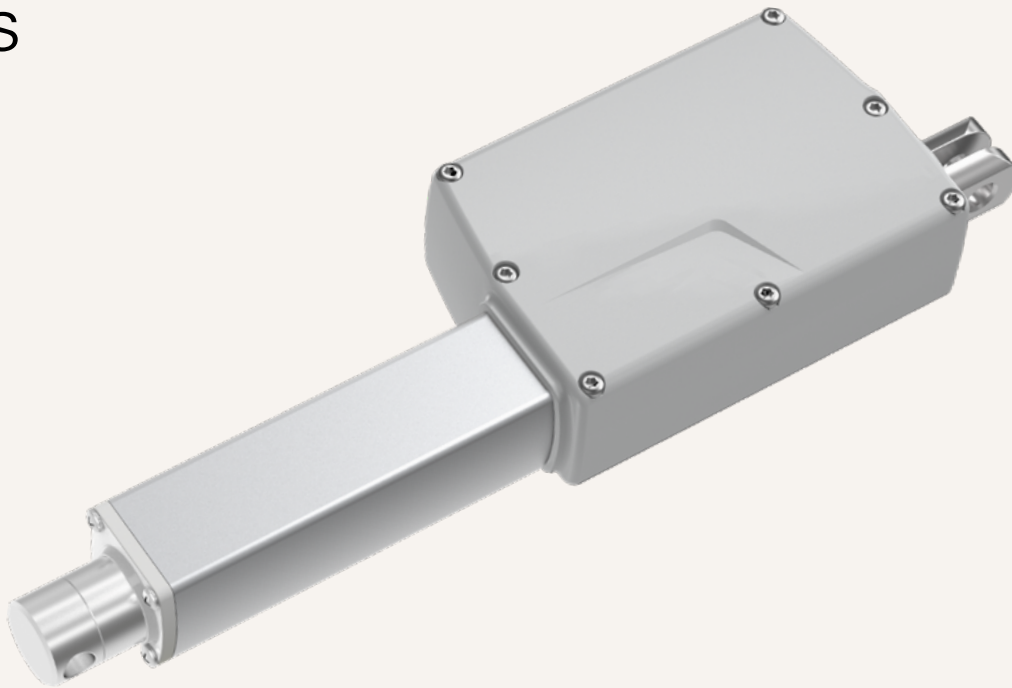


TA29

series



Product Segments

- **Care Motion**
- **Ergo Motion**

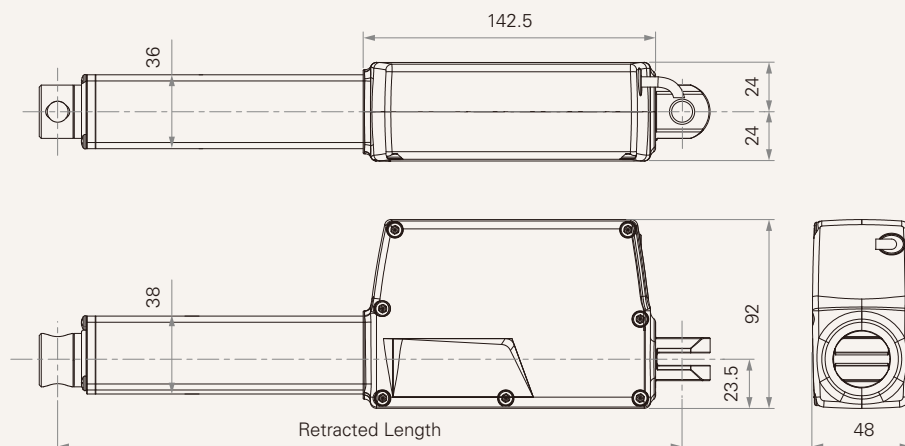
TiMOTION's TA29 is one of our new generation medical DC linear actuators, which can lift up to 6000N, yet has a small installation dimension. In addition to this, its IP rating is up to IP66W. The TA29 is highly recommended for various medical applications that require a short retracted length, yet need to support a large force, such as the leg adjustment or sling angle actuator on the patient hoist system.

General Features

Max. load	6,000N (push); 3,500N (pull)
Max. speed at max. load	3mm/s
Max. speed at no load	30.2mm/s
Retracted length	≥ 178mm (depending on chosen options)
IP rating	IP66W
Stroke	25~600mm
Output signals	Hall sensors, POT
Voltage	12/24V DC; 12/24V DC (PTC)
Color	Black, grey
Operational temperature range	+5°C~+45°C
Suitable for patient hoist application	

Drawing

Standard Dimensions
(mm)



Load and Speed

CODE	Load (N)		Self Locking Force (N)	Typical Current (A)		Typical Speed (mm/s)	
	Push	Pull		No Load 32V DC	With Load 24V DC	No Load 32V DC	With Load 24V DC
Motor Speed (4800RPM, Duty Cycle 10%)							
B	1500	1500	1500	1.5	5.0	30.2	17.7
C	2500	2500	2500	1.5	5.0	16.0	9.1
D	3500	3500	3500	1.5	5.0	10.9	6.5
E	4500	3500	4500	1.5	4.5	6.5	4.0
P	6000	3500	6000	1.5	4.5	5.5	3.0
Motor Speed (5200RPM, Duty Cycle 10%)							
H	1000	1000	1000	1.5	3.5	30.0	15.0
K	1500	1500	1500	1.5	3.5	20.0	10.0
L	2000	2000	2000	1.5	3.7	15.0	7.5
M	2500	2500	2500	1.5	3.7	10.0	5.0
N	4000	3500	4000	1.5	3.7	5.4	2.8

Note

- 1 Please refer to the approved drawing for the final authentic value.
- 2 The current & speed in table are tested when the actuator is extending under push load.
- 3 This self-locking force level is reached only when a short circuit is applied on the terminals of the motor. All the TiMOTION control boxes have this feature built-in.
- 4 The current & speed in table are tested with 24V DC motor. With a 12V DC motor, the current is approximately twice the current measured in 24V DC; speed will be similar for both voltages.
- 5 The current & speed in table and diagram are tested with TiMOTION control boxes, and there will be around 10% tolerance depending on different models of the control box. (Under no load condition, the voltage is around 32V DC. At rated load, the voltage output will be around 24V DC)
- 6 Standard stroke: Min. ≥ 25 mm, Max. please refer to below table.

Load (N)	Max Stroke (mm)
6000	450
3500 \leq load \leq 4500	600
< 3500	1000